

# REPORT ON EXCELLENCE

Annual Report for Atlantic Community School District  
October, 2009

## Atlantic Community Schools Mission

## ANNUAL REPORT INTRODUCTION

Dan Crozier, Superintendent

**The Atlantic Community School District will prepare all learners to be creative, innovative, and productive citizens by providing diverse opportunities to learn and apply relevant skills and knowledge in a positive, disciplined and challenging environment.**

*Academic Achievement For  
2008-2009 Charts*

*Other Assessment Data for  
2008-2009*

*District Enrollment*

*Building & Staff Profile*

*Atlantic Board of Education*

*Comprehensive School  
Improvement Plan (CSIP)*

*Community Financial Support*  
•Physical Plant & Equipment  
Levy (PPEL) Projects  
•Instructional Support Levy  
•School Improvement Local  
Option (SILO)

*Budget Report*

Send any comments or suggestions  
to:

Atlantic Community School  
District  
1100 Linn Street  
Atlantic, Iowa 50022

Phone: 712-243-4252

This document can be viewed  
<http://www.atlantic.k12.ia.us>  
Achievement – APR -2008-2009 -  
to the Community

Student achievement in reading, math, and science is the focus of the Atlantic Community Schools. Student learning is reinforced by state of the art technology and an award-winning School-To-Work program. Staff members collaborate with parents and community members to create a positive learning climate where all students feel safe and connected to school.

Achievement in reading, math and science sets the stage for future learning. Many resources have been committed to continue progress towards high achievement in the core areas and to increase proficiency levels for struggling students. Test results show for the first time the middle school has been identified as a school in need of assistance (SINA) in reading. Test results also show that the elementary and high schools have been placed on the watch list in reading. In math, students in elementary schools and high school have met the academic indicators. The middle school has been placed on the watch list for math and students need to meet minimal expectations to be taken off the watch list.

During the 2008-2009 school year, School Improvement Local Option tax (SILO) funds were used to update the heating and air conditioning system in the Washington building. The system was replaced with a geothermal system with forced air to serve the building. This system will provide an excellent environment to increase learning for both students and staff.

To respond to a larger group of learners, the Atlantic Community School district applied and received the State Voluntary 4-Year Old Grant. The new undertaking included cooperative learning with the Jack and Jill Preschool, the Little Lambs Preschool, and the Head Start Program. Through this joint effort, students will become more prepared to increase student achievement as they enter the elementary school environment. The skills they develop as four-year-olds will provide the best instructors with an opportunity to set new goals for all students.

In Atlantic teachers are some of the leading instructors to gain training in the Iowa Core. The professional development that will continue should provide a better instructional staff and increased learning for the students through their high school years.

### 2009-2014 DISTRICT LONG-RANGE GOALS

**GOAL 1: All K-12 students will achieve at high levels in reading.**

**GOAL 2: All K-12 students will achieve at high levels in mathematics.**

**GOAL 3: All K-12 students will achieve at high levels in science.**

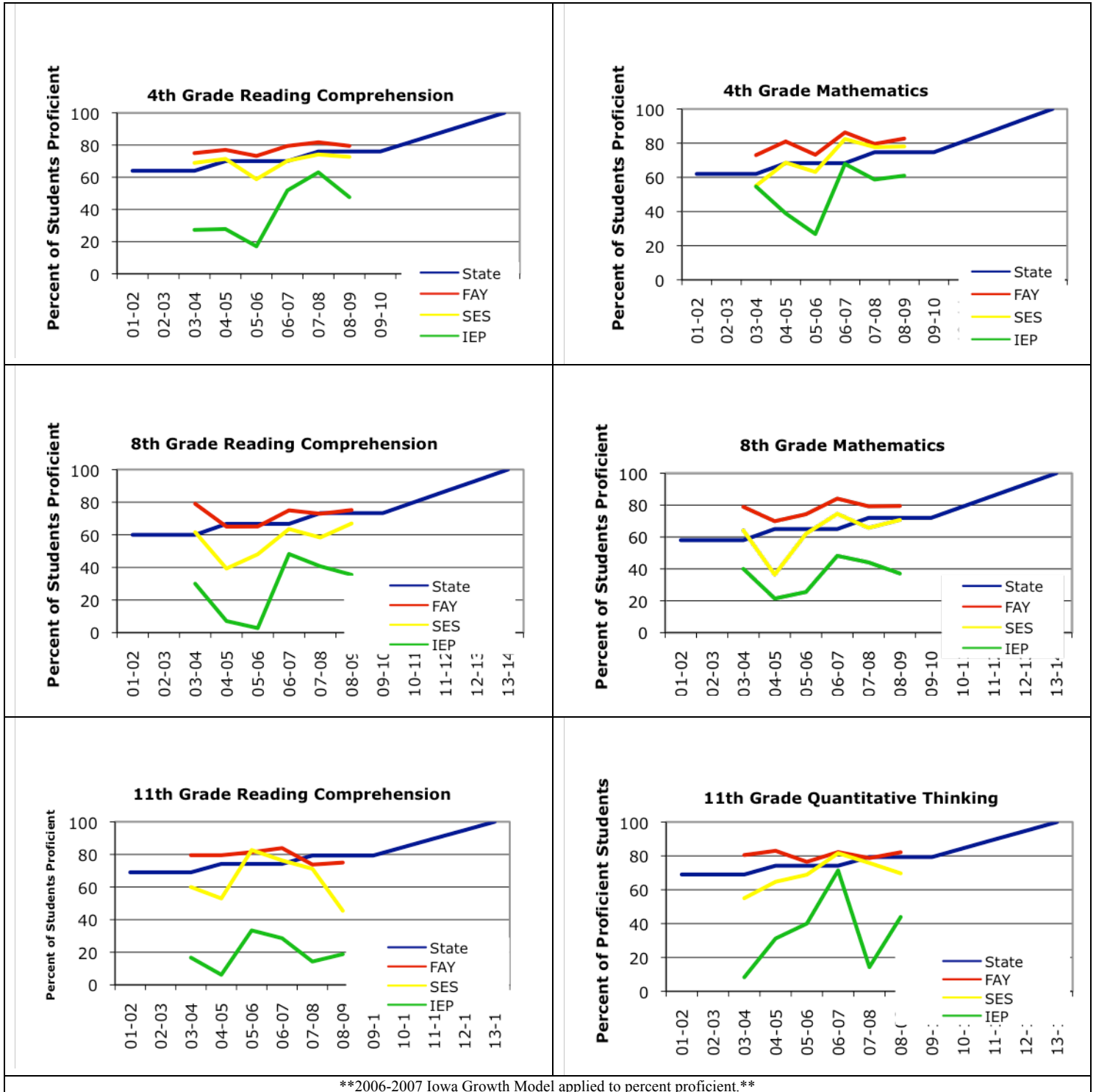
**GOAL 4: All K-12 students will integrate technology into their learning (reading, math, and science).**

**GOAL 5: All students will feel safe at and connected to school.**

## ACSD Academic Achievement 2008-2009

The following charts show the percent of Full Academic Year (FAY) Atlantic students proficient in reading, math, and science using the Iowa Tests of Basic Skills (ITBS) and the Iowa Tests of Educational Development (ITED). These proficiencies are compared to the Iowa (state) reading and math trajectories established for proficiency for No Child Left Behind (NCLB). For a student to be considered proficient, the student must score above the 40<sup>th</sup> percentile (NPR) on these standardized achievement tests. Proficiencies of all (FAY) students, low socioeconomic students (SES), and students on Individualized Educational Plans (IEP) are shown below. Beginning 05-06, the scores indicate compacted grades levels, grades 3-5, 6-8, and grade 11.

\*The complete 2004-2005 Annual Progress Report (APR) can be found at <http://www.atlantic.k12.ia.us> or a paper copy at the Office of the Superintendent.



\*\*2006-2007 Iowa Growth Model applied to percent proficient.\*\*

**% of Students Scoring above the 40th NPR on ITBS/ITED**

	Reading Comprehension					Math Total					Science				
	04-05	05-06	06-07	07-08	08-09	04-05	05-06	06-07	07-08	08-09	04-05	05-06	06-07	07-08	08-09
4th Grade	78%	71%	79%	82%	79%	81%	72%	86%	80%	83%	NA	78%	87%	74%	75%
8th Grade	65%	64%	75%	73%	75%	70%	76%	84%	79%	79%	80%	69%	84%	76%	79%
11th Grade	77%	80%	84%	74%	75%	80%	75%	82%	79%	79%	73%	77%	80%	73%	82%

Beginning in 2005-2006, grade levels were compacted so 4<sup>th</sup> grade contains the % proficient in grades 3-5 and 8<sup>th</sup> grade contains the % in grades 6-8.

**Other assessment data for 2008-2009:**

- The Atlantic Community School District met participation rate in reading and mathematics. The district met the annual measurable objective (AMO) in mathematics, but is on the Watch List for reading.
  - The Atlantic High School is on the Watch List, year 1, for reading.
  - The Atlantic Middle School is on the School in Need of Assistance, year 1, in reading and on the Watch List, year 1, in mathematics.
  - Grades 3-5 missed Annual Yearly Progress in reading and mathematics.
- 70.73% of the 2009 graduating seniors intended to pursue post-secondary education/training.
- 55.28% of the 2009 graduates completed a core program of studies: 4 years of English, 3 or more years each of mathematics, science, and social studies compared to 61.6% of the 2008 graduates.
- The average ITBS/ITED National Percentile Rank for grades 2-8, and 11 in reading comprehension increased to 64.4(fall 2008) from 60.6(fall 2007).
- The average ITBS/ITED National Percentile Rank for grades 2-8, and 11 in mathematics increased from 60.6(fall 2007) to 64.4(fall 2008). As a class, grades 3-8 made a year’s growth or more (NGE) in reading, math, and science.
- In grades 3-8, 5 out of the 6 grades exceeded the expected (typical) growth on NWEA reading and math.
- 30% of the 2008-2009 sophomores in reading and 26% in mathematics scored in the upper quartile on the PLAN.
- 70.19% of the students, grades 9-12, who took ACT during 2008-2009 scored above the cut score of 20 (Spring, 2009 BEDS)
- District assessments used to measure academic achievement are listed below.

2008-2009 District Assessments*	Grade Level
CBM	K-5 <sup>th</sup> math
ITBS/ITED	2 <sup>nd</sup> -9 <sup>th</sup> , and 11 <sup>th</sup>
DIBELS	K- 5 <sup>th</sup> reading
NWEA	3 <sup>rd</sup> – 8 <sup>th</sup> reading and math
NWEA	4 <sup>th</sup> -8 <sup>th</sup> science
PLAN	10 <sup>th</sup> reading, math, and science
ASVAB	12 <sup>th</sup>

\*Results of these measures can be found at <http://www.atlantic.k12.ia.us>. Click on APR 2008-2009.

- The district’s long-range goals for all K-12 students emphasize high levels of achievement in mathematics, reading, and science. During 2008-2009, 4 out of the 8 indicators for increasing student achievement were met in math, 5 out of 8 indicators in reading, and 5 out of 5 indicators in science.
- The district’s focus at each level during 2009–2010 will be to increase student achievement in the area of reading comprehension.

**Other assessment data for 2008-2009** (reported in 2007-2008):

- The Atlantic High School graduating class of 2009 had a graduation rate of 90.5%, an increase of 2.9% from 2008, compared to the state graduation rate of 88.7%.
- The 2008-2009 dropout rate for grades 7-12 was 4.5% with no dropouts in grades 7 and 8.
- K-8 average daily attendance in 2008-2009 was 96.2%, an increase of 0.09 from 2007-2008.

## DISTRICT ENROLLMENT

The district's enrollment had continued to decline since 2000-2001, and in 2008-09 there was a decrease of 30 students. Enrollment is projected to decrease again in 2009-10.

### CERTIFIED ENROLLMENT 2000-2001 - 2008-2009

School Year	HS Grades 9-12	EOC Grades 9-12	MS Grades 6-8	SE Grades 4-5	WA Grades K-3	Special Ed Preschool, Self Contained, and S&P	All Grades Home School, Tuition Out and Open Enrolled Out	Certified GRAND TOTAL
2008-09	448	20	312	191	406	16	36.2	<b>1429.2</b>
2007-08	474	17	284	180	421	30	53.1	<b>1459.1</b>
2006-07	455	14	309	199	416	17	48.8	<b>1458.8</b>
2005-06	464	16	324	210	406	18	53	<b>1491.0</b>
2004-05	439	11	340	195	388	23	44.6	<b>1440.6</b>
2003-04	423	14	350	205	388	25	51.0	<b>1456.0</b>
2002-03	457	10	365	210	402	27	55.5	<b>1526.5</b>
2001-02	456	18	342	232	408	29	64.6	<b>1549.6</b>
2000-01	504	19	347	248	433	20	50.3	<b>1621.3</b>

### STUDENTS SERVED BY ATLANTIC COMMUNITY SCHOOL DISTRICT – SEPTEMBER, 2008

<u>HIGH SCHOOL</u>		<u>MIDDLE SCHOOL</u>		<u>SCHULER ELEM</u>		<u>WASHINGTON ELEM</u>	
Grade 12	139	Grade 8	120	Grade 5	87	Grade 3	119
Grade 11	118	Grade 7	103	Grade 4	119	Grade 2	106
Grade 10	124	Grade 6	116			Grade 1	98
Grade 9	110					Kindergarten	109
						Disc Garden	11

### ADDITIONAL STUDENTS SERVED BY ATLANTIC COMMUNITY SCHOOL DISTRICT

Open Enrolled In	102.0
Home School Open Enrolled In	4.7
Special Education Tuition In	12.0

Students attending are from:

Adair-Casey - AHST - Anita - C & M - Corning - Council Bluffs - Elk Horn-Kimbalton – Exira - Griswold  
Harlan - IKM - Nodaway Valley - Red Oak - Riverside - Tri-Center - Walnut

**TOTAL STUDENTS SERVED BY THE DISTRICT = 1505.9**

## BUILDING and STAFF PROFILE

**Over 39.5% of Atlantic Community District teachers have training at or beyond a Master's Degree level.**

<i>Certified Staff</i>	FTE		<i>Support Staff</i>	Head Count	FTE
High School	35.3		Custodial / Maintenance	14	12.81
Middle School	27.83		Food Service	22	12.78
Schuler Elementary	18		Para-Educators / Teacher's Aides	45	39.38
Washington Elementary	35		Secretarial	7	6.28
Nurses	3		Transportation	10	5.81
Technology Director	1		Supervisors	3	2.83
Administrators	6		Central Office	4	3.83

## **BOARD OF EDUCATION**

Serving on the School Board is a challenging responsibility requiring leadership, vision, dedication and a code of ethics. Our school board members are entrusted with one of the most important responsibilities for our children – ensuring that Atlantic Community School District help students obtain the highest levels of educational achievement. While school board members receive no pay, the reward comes with the satisfaction of meeting the needs of our children and our community.

**Phillip Hascall, President**  
**Jon Martens, Vice President**  
**Dennis Davis, Director**  
**Beth Ann McDermott, Director**  
**Kristy Pellett, Director**  
**Dan Crozier, Superintendent**  
**Lori Robertson, Board Secretary**

## **COMPREHENSIVE SCHOOL IMPROVEMENT PLAN (CSIP)**

Spanning the next five years, the Comprehensive School Improvement Plan (CSIP) will be the guide that benefits students' achievements through continuous school improvement. This plan was developed to meet the state law and the federal guidelines required by the No Child Left Behind (NCLB) legislation. The plan evolved from basically four questions:

- 1) What do data tell us about our student-learning needs?
- 2) What do/will we do to meet student-learning needs?
- 3) How do/will we know that student learning has changed?
- 4) How will we evaluate our programs and services to ensure improved student learning?

An integral component is the district's career development plan that focuses on providing staff members training to improve student learning. This staff development must be based on research-based best practices, must be supported by the students' needs based on achievement data, and must be identified in the CSIP. This plan also outlines how the other state and federal programs and services (Title I, II, and IV, the mentoring program, TAG, Perkins, At-Risk, the special education programs and services) from which the Atlantic Community School District receives monies are annually evaluated.

## **COMMUNITY FINANCIAL SUPPORT**

### **Physical Plant and Equipment Levy (PPEL) Projects**

On May 8, 2001 the voters of Atlantic School District approved renewal of the Physical Plant and Equipment Levy (PPEL) that is funded through income surtax and local property taxes. The PPEL provides the district with the additional money needed to properly maintain and upgrade buildings and facilities. With declining student enrollment the district is unable to obtain as much "General Fund" money which is needed for education purposes. The PPEL levy provides the district with money for maintenance, repairs, and upkeep of its infrastructure and the purchase of equipment costing over \$500 per item.

With the use of PPEL monies during 2008-09, the district was able to purchase computers, Maintenance and repair items included roofing and tuck pointing; sidewalk repair; leasing school buses (3), a 2008 Expedition, and a sander/snowblade.

PPEL expenditures for 2008-09 were \$570,555.

### **Instructional Support Levy**

The Instructional Support Levy has provided resources for instructional equipment and supplies; computers, software, and development of technology; expanded literacy support; textbook adoption; and professional development for staff.

### **School Infrastructure Local Option (SILO)**

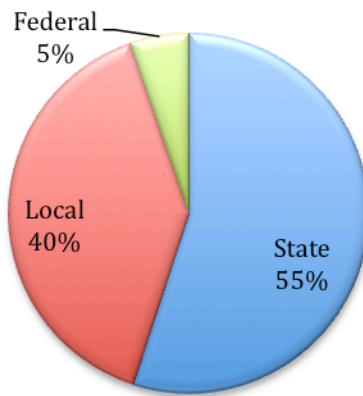
On August 24, 2004 Cass County residents voted to implement a School Infrastructure Local Option sales tax. The tax provides an alternative to property taxes for funding school buildings and capital expenditures. A portion of the tax will also be used to offset debt obligations.



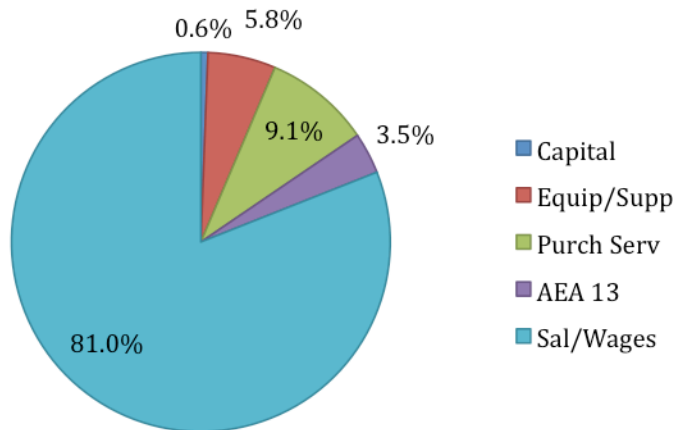
The Atlantic Community School District is constantly striving to provide the best educational program possible at the lowest cost to the community. As a service organization 81.0% of the budget is expended for personnel costs. The State of Iowa provides 44.0% of the total district revenue.

	<b>Operating Fund</b>	<b>\$14,700,385</b>
	<b>Assessed valuation per pupil</b>	<b>\$ 224,182</b>
FY 2008-09	<b>Per pupil expenditure</b>	<b>\$ 10,283</b>
	<b>Average teacher salary (without co-curricular)</b>	<b>\$ 49,208</b>
	<b>Tax rate per \$1,000 tax valuation</b>	<b>\$ 14.26099</b>

### Sources of Revenue



### Expenditures



**NOTICE OF NONDISCRIMINATION**

It is the policy of Atlantic Community Schools to provide an educational and working environment that provides an equal opportunity to all. In accordance with federal and state law Atlantic Community School District prohibits unlawful discrimination on the basis of disability, sex, age, race, color, national origin, religion, veteran status, sexual orientation, pregnancy, and marital status. This applies to all district administrators, staff, students, applicants for employment, and visitors. Students, parents, staff or other individuals who believes that he/she has been subjected to discrimination or harassment in violation of the District's Equal Employment Opportunity Policy and/or the Harassment Policy may take action through an informal process, or a formal complaint process, or both."