

**A
T
L
A
N
T
I
C**



Schuler Elementary



Washington Elementary



Atlantic Middle School



Atlantic High School



COMMUNITY

Progress Report

2010-2011

REPORT ON EXCELLENCE

Annual Report for Atlantic Community School District
October, 2011

Atlantic Community Schools Mission

ANNUAL REPORT INTRODUCTION

Dr. Michael K. Amstein, Superintendent

The Atlantic Community School District will prepare all learners to be creative, innovative, and productive citizens by providing diverse opportunities to learn and apply relevant skills and knowledge in a positive, disciplined and challenging environment.

Superintendent

Dr. Michael Amstein

Business Manager

Mary Beth Fast

Transportation

Dave Eckles

Food Service

DeeAnn Schreiner

Maintenance

Russell Peck

Technology Director

Roger Warne

Washington Elementary

Stacey Hornung, Principal

Schuler Elementary

Matt Alexander, Principal /

Curriculum Director

Atlantic Middle School

Cameron Smith, Principal

Atlantic High School

Heather McKay, Principal

Josh Rasmussen, Assistant

Principal / Athletic Director

Send any comments or suggestions to:

Atlantic Community School
District

1100 Linn Street
Atlantic, Iowa 50022

Phone: 712-243-4252

This document can be viewed
<http://www.atlantic.k12.ia.us>
Community Annual Report

The Atlantic Community School District will continue to focus on student achievement in the areas of reading, math and science. With the ever-increasing achievement benchmarks for the No Child Left Behind Act of 2001 (NCLB), students are being required annually to raise their performance levels in reading and math. Based on the benchmark trajectory, all students will be expected to be proficient in reading and math by 2014. Teachers and administrators in the school district continue to work with all students to increase academic performance by providing more opportunities to master concepts and content.

Test results for the 2010-11 school year reveal that district students are making significant academic growth in comparison to previous school years. This is evidenced by the 2011-12 AYP (Adequate Yearly Progress) status of the district. During 2010-11, the district was identified as a district in need of improvement (DINA1) in reading and was on the (Watch List) in math by the Iowa Department of Education. The 2011-12 district AYP status indicates that ACSD was removed from the Watch List for math and moved from DINA 1 to the Delay-1 in reading. As for the individual schools in Atlantic, Atlantic High School is designated as on the Watch List for reading and SINA 1 for math. Atlantic Middle School made some of the biggest gains in student achievement within the district and moved from SINA 2 to Delay-2 in reading and from SINA 1 to the Delay-1 in reading. Schuler Elementary made AYP in reading and is on the Watch List in math. Washington Elementary made AYP in reading, but is also on the Watch List in math based on 2010-11 test data.

To better serve students, teachers in the Atlantic Community School District have been involved in professional development focused on Authentic Intellectual Work (AIW) and Iowa Core/Common Core. The district is currently utilizing the specific strategies to address the needs of our At-Risk students by providing additional opportunities to master content. The strategies include the use of computer-generated applications that focus on the individual needs of students and additional support to assist the district in meeting the needs of all of our students.

The district continues to utilize the School Improvement Local Option tax (SILO) to fund the geothermal HVAC and renovation project at Atlantic Middle School. The School Board recently approved the sale of revenue bonds to fund the AMS project and accepted construction bids. The AMS project is expected to be completed by the summer of 2013. The district is also working towards certification in Iowa's Safe School Program. The district has installed an access control system at all schools, except at AMS (cameras and access control are included in the renovation plans) and has installed security cameras at Washington Elementary and Schuler Elementary and is adding additional cameras to the high school campus.

Technology continues to be a focus for the district. This is evidenced by the completion of the new ICN classroom at Atlantic High School and the possibility of running a fiber-optic line to the high school. The district continues to utilize Microsoft settlement funds to improve student achievement. The district is continuing with the supplemental reading program, Achieve 3000. Students are able to access this web-based program through classroom computers, in a computer lab or at home. This program helps students work at their reading level with challenging, non-fiction content and vocabulary. Atlantic Middle School and Schuler Elementary utilized Microsoft funds to continue utilizing Reading Assistant, a computer generated and managed intensive reading program for struggling readers. Students are able to develop fluency and comprehension skills while working through computer generated activities that are designed to be specific to the individual student needs.

Students in the Atlantic Community School District will:

- apply math skills and concepts to real life situations.
- demonstrate respect and responsibility for self, others, property, and the environment (social skills/life skills).
- write clearly to express ideas and disseminate information.
- read for information and enjoyment.
- persuade, inform, entertain, and solve problems through speech.
- apply reasoning skills when making decisions, solving problems, and organizing information.
- possess skills which enable them to contribute to their community (citizenship).
- gather, process, and evaluate information (study skills).
- experience the fine arts personally and as an extension of local and world culture through listening, viewing, or participating.
- access and apply technology to manage information, to learn, and to enhance the quality of life.
- apply listening skills to gather information.

Comprehensive School Improvement Goals for 2009-2014

GOAL 1: All K-12 students will achieve at high levels in reading.

GOAL 2: All K-12 students will achieve at high levels in mathematics.

GOAL 3: All K-12 students will achieve at high levels in science.

GOAL 4: All K-12 students will integrate technology into their learning (reading, math, and science).

GOAL 5: All students will feel safe at and connected to school.

2011-2012 Board Members

Kristy Pellett, President	Term Expires 2013
Dennis Davis, Vice President	Term Expires 2015
Phil Hascall	Term Expires 2015
Josh McLaren	Term Expires 2013
Rod Hartwig	Term Expires 2015
Mary Beth Fast, Board Secretary	
Melina McDermott, Treasurer	

Graduation Rate

(Title I cohort graduation rate formula)

Year	Atlantic	State
2009	83.94%	87.30%
2010	78.33%	88.80%
2011	87.70%	

Dropout Rate

grades 7-12

Year	Atlantic	State
2008-2009	3.35%	
2009-2010	3.41%	2.34%

Percent of Students Pursuing Postsecondary Training

Class of	Percent
2009	70.73%
2010	79.63%
2011	68.42%

Percent of Students Completing a Core Program

(4 years of English, 3 or more years each of mathematics, science, and social studies)

Class of	Percent
2009	55.28%
2010	68.52%
2011	100%

Percent of Students who are Predicted to be Successful in Postsecondary Studies

according to the ACT results (a score above 20)

Average Composite Score

Year	Atlantic	State
2007-2008	22.7	22.4
2008-2009	21.6	22.4
2009-2010	23.2	22.2
2010-2011	23.0	22.3

Average Daily Attendance

K-12

Year	Atlantic
2008-2009	95.39%
2009-2010	95.09%
2010-2011	94.89%
K	95.68%
1st	95.79%
2nd	95.93%
3rd	96.48%
4th	96.29%
5th	96.15%
6th	96.06%
7th	96.22%
8th	95.21%
9th	95.28%
10th	93.08%
11th	92.11%
12 th	91.64%

Enrollment History (BEDS) of the Atlantic Community School District

Fall 2009	1591 students
Fall 2010	1590 students
Fall 2011	1619 students

Reporting and Accountability of Student Achievement

The Iowa Tests of Basic Skills for grades 3-8 and the Iowa Test of Educational Development for grades 9-11 serve as the state test for accountability/decision making under No Child Left Behind. At the federal level what is reported in the AYP (Adequate Yearly Progress) is only minimal, yet determines the status of the district according to the established NCLB trajectories in reading and math. (pages 14-15)

The state of Iowa requires under Chapter 12 that districts report reading, math, and science data from the state test in the APR (Annual Progress Report) and then to the public through a community report. (pages 4-13)

At the local level, the district uses the results of the tests to monitor individual achievement in reading, math, and science to make adjustments to curriculum, to meet the needs of students, and to monitor student growth. Student Achievement Overview (page 7) states the strengths and concerns noted from the 2010 fall testing and from other data collected by the state.

Breaking Barriers to Learning and Teaching Award

Atlantic received this award that recognizes Iowa school districts that are making significant strides in closing the academic achievement gap. Improvements were made with the low-income (SES) students in grades three and six in reading. There was at least a 20% or more improvement in reading while at the same time not seeing achievement decline by more than 5% in any other subgroup. This award applauds districts that balance maintaining achievement among all students while working to make major gains in key areas.

Student Achievement Overview

Celebrations

- The 2010-2011 Annual Progress goals in reading and science were met.
- Grades 4-9 and 11 increased their average national percentile rank from the previous year in reading.
- Grades 3-4, 6-9, and 11 increased their average national percentile rank from the previous year in math.
- Grades 4, 7-11 increased their average national percentile rank from the previous year in science.
- The average growth (NGE) was a year or more in grades 3-9 in reading, math, and science,
- The number of advanced proficient students in reading increased in grades 4-9, and 11,
- while the number of less than proficient students in reading decreased in grades 4-11.
- The number of advanced proficient students in math increased in grades 4-9, and 11,
- while the number of less than proficient students in math decreased in grades 3-4, 6-9, and 11.
- The number of advanced proficient students in science increased in grades 4,7-9, and 11,
- while the number of less than proficient students in science decreased in grades 4, and 7-11.
- Students (FAY) in grades 3-5, 6-8 scored over the NCLB reading benchmark.
- Students (FAY) in grades 6-8 scored over the NCLB math benchmark.
- The performance between SES and non SES and IEP and non IEP increased and the gap decreased.

Concerns

- The high school graduation rate has been dropping and has been below the state average.
- The number of students, grades 7-12, considered "dropouts" is slightly higher than the state average.
- The gap between the IEP and no IEP students is the greatest in reading.
- One half of the non proficient students in reading have IEP's and the other half does not.
- Two thirds of the non proficient students in reading are low social economic and one third are not.
- About one fifth of the full academic year students are not proficient in reading.

Comprehensive School Improvement Goal in READING 2009-2014

All K-12 students will achieve at high levels in reading.

Annual Improvement Goal in READING for 2010-2011

The percent of sixth through eighth grade full academic year students scoring above the 40th NPR in reading comprehension on the Iowa Tests of Basic Skills will be above 76% proficient in 2010-2011 which is above the 71.1% proficiency in 2009-2010 (AYP-building level-# proficient + # proficient by growth) in accordance with the Iowa Accountability established trajectories in reading.

The reading goal was met. The percent of sixth through eighth grade full academic year students scoring above the 40th NPR in reading comprehension on the Iowa Tests of Basic Skills was 83.68% which was above the goal of 76% proficient. There were 235 FAY students proficient in reading plus 6 students proficient by growth out of 288 FAY 6th through 8th grade FAY students.

Annual Improvement Goal in READING for 2011-2012

The percent of FAY sixth through eighth grade IEP students who are proficient in reading comprehension on the Iowa Assessments will increase from the current level in the cohort of 2016-18, which is currently 36%.

Actions to meet the READING goal

Utilizing Achieve 3000 with all general education and special education students
Using Reading Assistant with the special education students.

Bridges to Literature (third year of this series – 8th graders had it as 6th graders) being utilized in the Pull Out Reading classes.

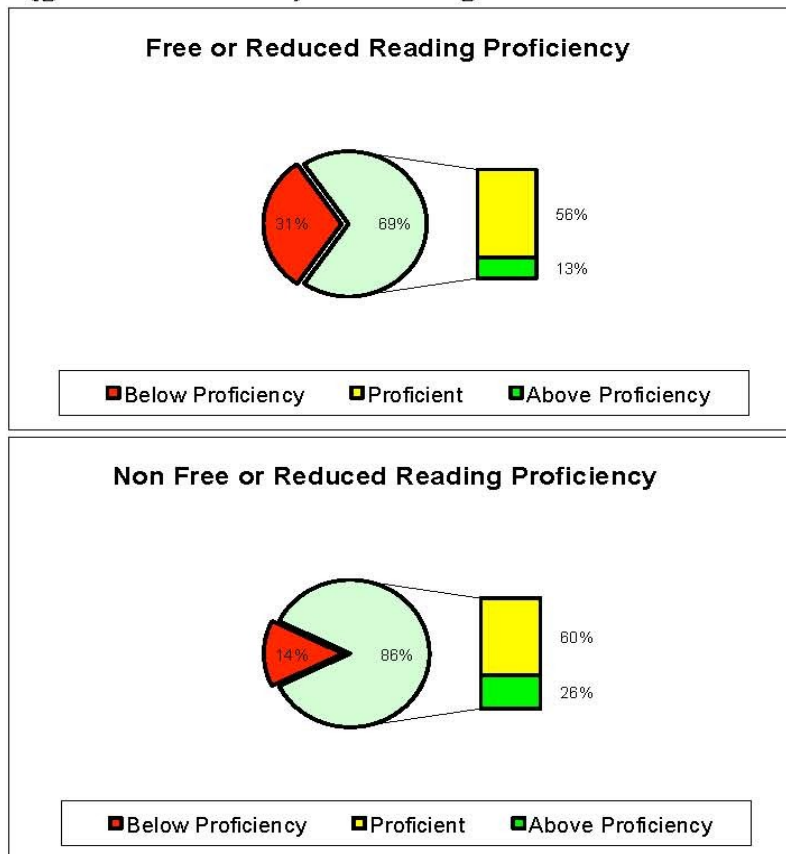
Skills workbook that goes along with the Bridges to Literature series is being utilized in the classes.

Reading Proficiency

Atlantic students who score above the 40th National Percentile Rank on the Iowa Tests of Basic Skills/ Iowa Tests of Educational Development on the READING COMPREHENSION portion of the test are considered proficient in reading. The following shows the percent of students proficient in reading over the past five years.

Grade Level	2006-07	2007-08	2008-09	2009-10	2010-11
3rd	65.9%	73.2%	73.1%	70.2%	80.4%
4th	78.9%	75.6%	82.8%	79.1%	81.5%
5th	78.7%	77.7%	74.7%	77.2%	85.9%
6th	69.1%	58.2%	72.3%	64.1%	82.1%
7th	61.2%	70.8%	63.0%	71.8%	79.1%
8th	67.2%	70.0%	73.3%	66.4%	77.8%
9th	81.6%	66.9%	76.1%	69.6%	71.8%
10th				72.6%	73.1%
11th	82.5%	70.4%	74.4%	69.8%	78.4%

The gap between the proficiency of students on free/reduced lunch and those not is 16% district-wide (grades 2nd-11th) in reading.



Comprehensive School Improvement Goal in MATHEMATICS 2009-2014

All K-12 students will achieve at high levels in mathematics.

Annual Improvement Goal in MATHEMATICS for 2010-2011

The percent of eleventh grade FAY students scoring above the 40th NPR on the Quantitative Thinking portion of the Iowa Test of Educational Development will be above 81% proficient in 2010-2011 which is above 71.03% proficiency in 2009-2010.

The math goal was not met. The percent of eleventh grade FAY students scoring above the 40th NPR on the Quantitative Thinking portion of the Iowa Test of Educational Development was 79.2% (80 out of 101 students) proficient in 2010-2011 which was below the goal of 81%.

Annual Improvement Goal in MATHEMATICS for 2011-2012

The percent of eleventh grade FAY students who are proficient on the Math Total portion of the Iowa Assessments will increase in 2011-2012, from the current level in the cohort of 2013, which is currently 73%.

Actions to meet the MATHEMATICS goal

Math course sequence and offerings have been changed to require more rigor and relevance (combining Algebra courses into one).

Achieve3000 will be implemented.

Additional Algebra course is being offered at AMS.

Course sequence has been changed to require more rigor (less Saxon).

End of course pre/post assessment will be used in Algebra I at AHS.

Para-educators to provide additional course assistance for students.

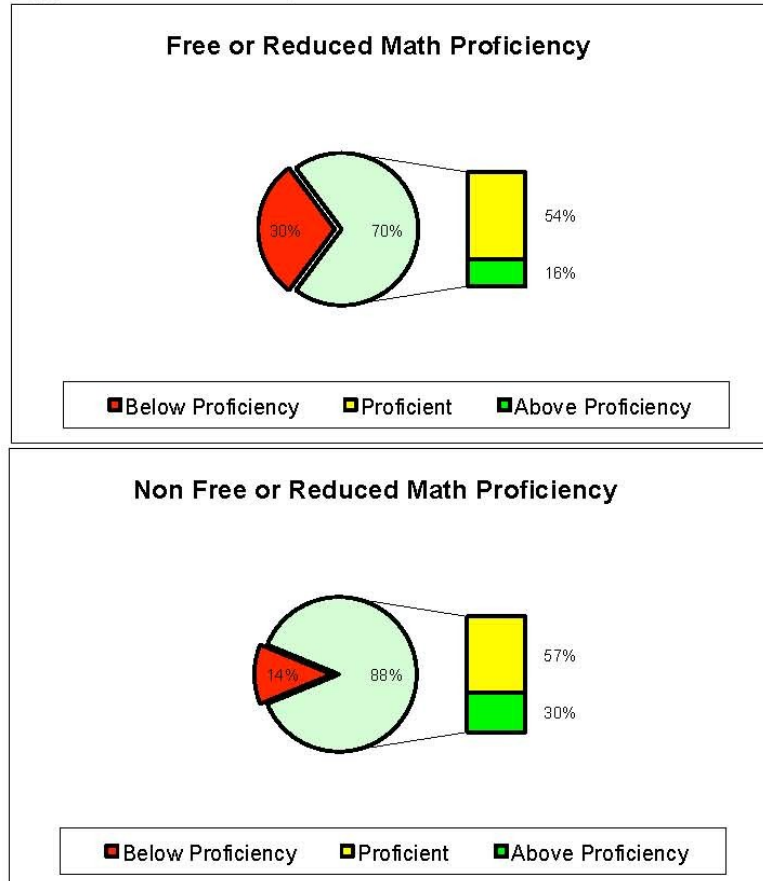
Acellus will be used as a credit recovery option in math.

Mathematics Proficiency

Atlantic students who score above the 40th National Percentile Rank on the Iowa Tests of Basic Skills/ Iowa Tests of Educational Development on the MATHEMATICS portion of the test are considered proficient in math. The following shows the percent of students proficient in math over the past five years.

Grade Level	2006-07	2007-08	2008-09	2009-10	2010-11
3rd	74.4%	66.9%	70.4%	72.2%	71.8%
4th	87.2%	77.9%	80.0%	82.6%	86.1%
5th	79.6%	81.2%	88.3%	86.1%	80.0%
6th	80.2%	71.8%	81.2%	76.4%	88.0%
7th	74.6%	78.3%	70.0%	79.1%	83.7%
8th	81.6%	72.8%	82.8%	69.3%	88.0%
9th	75.2%	73.6%	73.2%	82.4%	75.7%
10th				70.8%	71.2%
11th	81.8%	74.8%	75.2%	67.5%	77.5%

The gap between the proficiency of students on free/reduced lunch and those not is 17% district-wide (grades 2nd-11th) in math.



Comprehensive School Improvement Goal in SCIENCE 2009-2014

All K-12 students will achieve at high levels in science.

Annual Improvement Goal in SCIENCE for 2010-2011

There will be an increase in the percentage of third through fifth grade FAY students scoring above the 40th NPR from 76.5% in 2009-2010 in science as measured by the Iowa Tests of Basic Skills to 77.5% proficient in 2010-2011.

This science goal was met. The percentage of third through fifth grade FAY students scoring above the 40th NPR in science as measured by the Iowa Tests of Basic Skills was 78.8% proficient in 2010-2011 which was above the goal of 77.5% proficient. 234 FAY students out of 297 FAY students scored above the 40th NPR.

Annual Improvement Goal in SCIENCE for 2011-2012

The percentage of third through fifth grade FAY students who are proficient in science, as measured by the Iowa Assessments, will increase from the current level in the cohort of 2019-21, which is currently 67%.

Actions to meet the SCIENCE goal

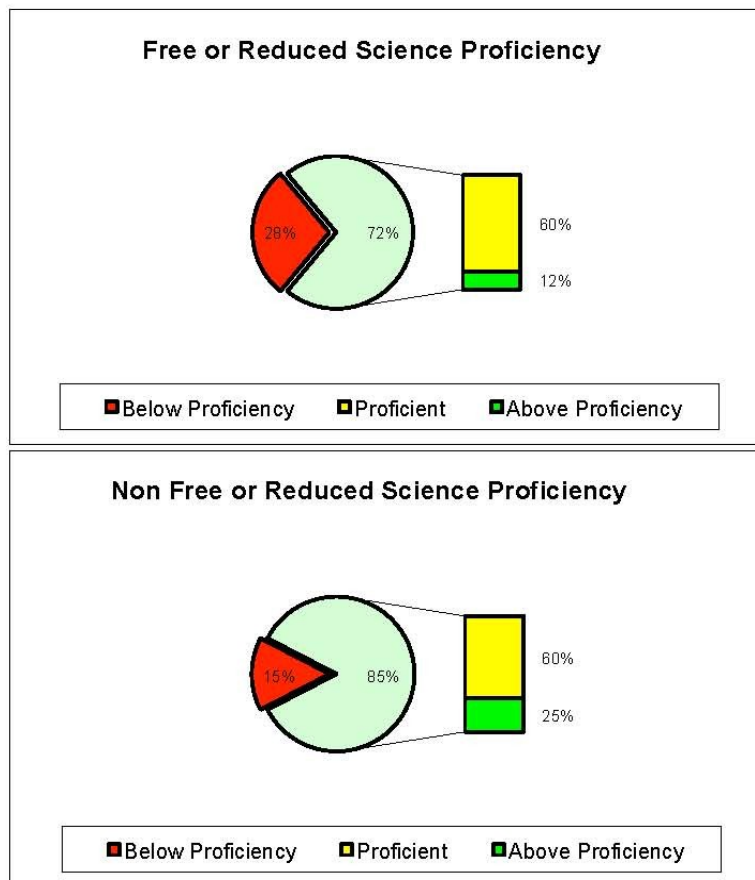
New science curriculum was purchased and implemented during 2010-2011. At the third through fifth grade levels, alignment of science units was made. Item analysis was made of the fall 2010 achievement data and adjustments were made to the curriculum.

Science Proficiency

Atlantic students who score above the 40th National Percentile Rank on the Iowa Tests of Basic Skills/ Iowa Tests of Educational Development on the SCIENCE portion of the test are considered proficient in science. The following shows the percent of students proficient in science over the past five years.

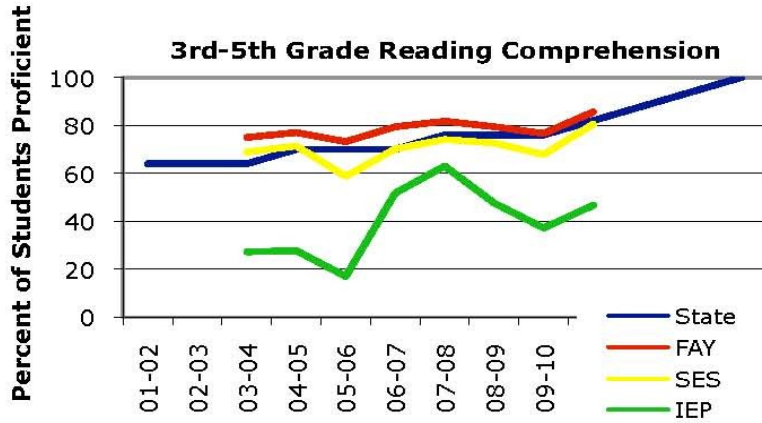
Grade Level	2006-07	2007-08	2008-09	2009-10	2010-11
3rd	74.4%	56.2%	63.0%	62.8%	69.4%
4th	81.1%	82.3%	75.9%	81.7%	80.5%
5th	84.2%	83.9%	89.7%	86.1%	81.6%
6th	75.5%	81.8%	84.7%	88.7%	86.3%
7th	79.4%	82.1%	69.7%	79.1%	84.8%
8th	83.7%	75.5%	83.8%	71.2%	95.4%
9th	73.6%	81.0%	74.3%	76.5%	77.6%
10th				66.0%	79.8%
11th	79.5%	73.3%	79.3%	72.5%	86.5%

The gap between the proficiency of students on free/reduced lunch and those not is 13% district-wide (grades 2nd-11th) in science.



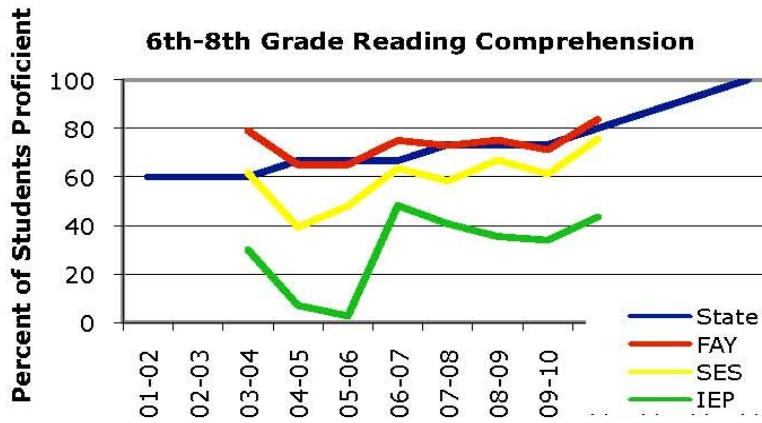
AYP Reading Comprehension for Grades 3-5, 6-8, and 11

AYP Status in Reading

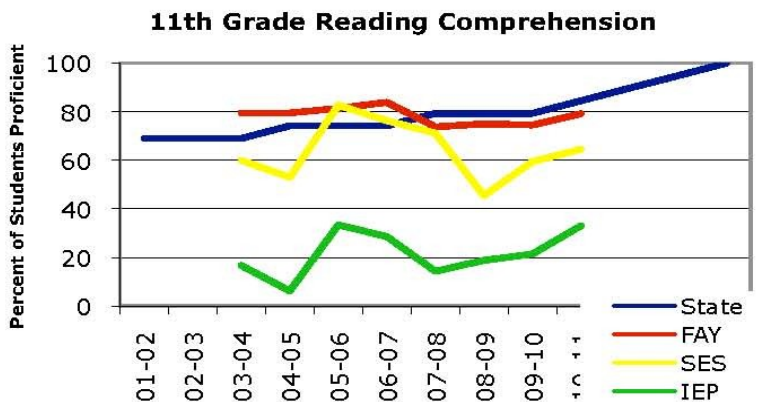


The district is in the first year of being removed from a District in Need of Assistance, year 1 (Delay-1) in reading.

The collapsed grades 3-5 met AYP in reading.



Students in collapsed grades 6-8 made AYP and AMS is in the first of two years of being removed from School in Need of Assistance, year 2 (Delay-2) in reading.



Students in grade 11 did not make AYP and AHS is on the Watch List for reading.

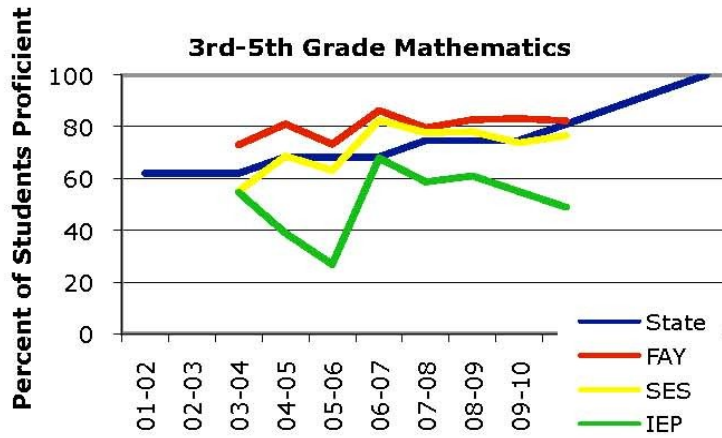
FAY=Full Academic Year students

SES=Social Economic Status students

IEP=Individual Education Plan students

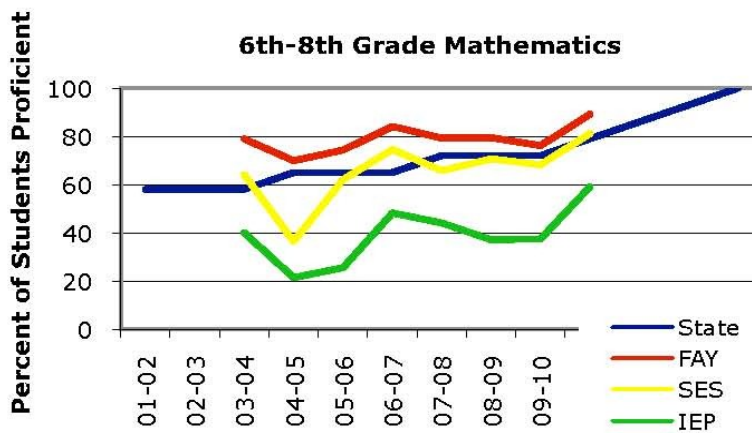
AYP Math Total for Grades 3-5, 6-8, and 11

AYP Status in Math

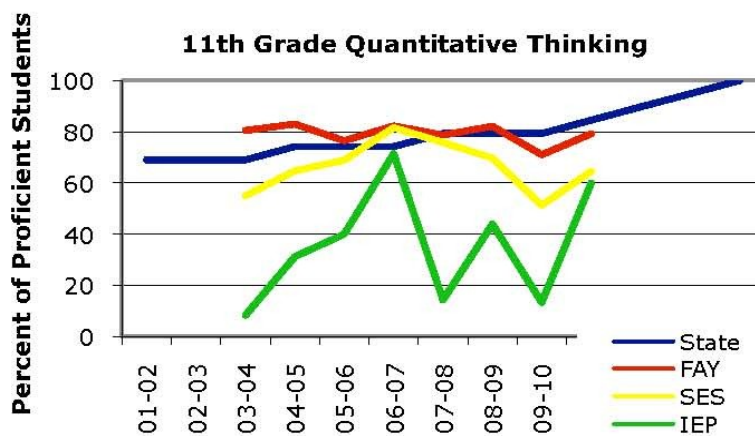


The district was removed from the Watch List in Mathematics.

The collapsed grades 3-5 missed AYP and Washington/Schuler are on the Watch List for mathematics.



Students in collapsed grades 6-8 made AYP and AMS is in the first year of being removed from School in Need of Assistance, year 1 (Delay-1) in mathematics



Students in grade 11 did not make AYP and AHS is a School in Need of Assistance, year 1 (SINA-1) in mathematics.

FAY=Full Academic Year students

SES=Social Economic Status students

IEP=Individual Education Plan students

2011-2012 School Calendar

Board Approved 03/08/2011

Start – Finish
(August 17, 2011 – May 17, 2012)

Summary of Calendar

Days in classroom:
First Semester 88
Second Semester 92
TOTAL CALENDAR DAYS 180

TOTAL CONTRACT DAYS 190

CALENDAR LEGEND

Classes Start	S
P/T Conferences	P
Holidays	H
No School	X
Vacation Day	V
In-Service Day	◇
Professional Development	□
Seniors Last Day of School	SL
Last Day of School	L

Holidays (H)

Sept 5 Labor Day
Nov 24 Thanksgiving Day
Dec 25 Christmas Day
Jan 1 New Year's Day
May 28 Memorial Day

Teacher In-Service Days ◇

August 12 1 day
August 15 1 day
August 16 1 day
October 19 2 hour early out
December 21 2 hour early out
Mar 7 2 hour early out
May 16 2 hour early out
May 18 1 day

Professional Development □	Dismissal Time
----------------------------	----------------

Aug. 24, 31	1 hour early
Sept. 7, 14, 21, 28	1 hour early
Oct. 5, 12, 26	1 hour early
Nov. 2, 9, 16, 23, 30	1 hour early
Dec. 7, 14	1 hour early
Jan. 11, 18, 25	1 hour early
Jan. 16	All Day
Feb. 1, 8, 15, 22, 29	1 hour early
Mar. 21 & 28	1 hour early
Apr. 4, 11, 18, 25	1 hour early
May 2, 9, 16	1 hour early

August					Student Days
M	T	W	Th	F	
8	9	10	11◇	12◇	
15◇	16◇	17S	18	19	3
22	23	24□	25	26	8
29	30	31□			11
September					
			1	2	13
5H	6	7□	8	9	17
12	13	14□	15	16	22
19	20	21□	22	23	27
26	27	28□	29	30	32
October					
3	4	5□	6	7	37
10	11	12□	13	14	42
17	18	19◇	20	21	47
24	25P	26□	27PX	28X	52
31					53
November					
	1	2□	3	4	57
7	8	9□	10	11	62
14	15	16□	17	18	67
21	22	23□	24H	25V	70
28	29	30□			73
December					
			1	2	75
5	6	7□	8	9	80
12	13	14□	15	16	85
19	20	21◇	22V	23V	88
26V	27V	28V	29V	30V	
January					
2V	3V	4	5	6	91
9	10	11□	12	13	96
16□	17	18□	19	20	100
23	24	25□	26	27	105
30	31				107
February					
		1□	2	3	110
6	7	8□	9	10	115
13	14	15□	16	17	120
20V	21	22□	23	24	124
27	28	29□			127
March					
			1	2	129
5	6	7◇	8	9	134
12	13	14P	15PX	16X	139
19V	20V	21□	22	23	142
26	27	28□	29	30	147
April					
2	3	4□	5	6V	151
9	10	11□	12	13	156
16	17	18□	19	20	161
23	24	25□	26	27	166
30					167
May					
	1	2□	3	4	171
7	8	9□	10SL	11	176
14	15	16□	17L	18◇	180
21	22	23	24	25	
28H	29	30	31		
June					
				1	
4	5	6	7	8	
11	12	13	14	15	

Date Events

Aug 11	◇	New Teacher Orientation In-Service Day
Aug 12	◇	Teacher In-Service Day
Aug 15	◇	Teacher In-Service Day
Aug 16	◇	Teacher In-Service Day
Aug 17	S	Begin 1 st Semester
Aug 24	□	Prof. Dev. – 1 hr Early Dismissal
Aug 31	□	Prof. Dev. – 1 hr Early Dismissal
Sept 5	H	Labor Day (No School)
Sept 7	□	Prof. Dev. – 1 hr Early Dismissal
Sept 14	□	Prof. Dev. – 1 hr Early Dismissal
Sept 21	□	Prof. Dev. – 1 hr Early Dismissal
Sept 28	□	Prof. Dev. – 1 hr Early Dismissal
TBA		Homecoming – 1 hr Early Dismissal
Oct 5	□	Prof. Dev. – 1 hr Early Dismissal
Oct 12	□	Prof. Dev. – 1 hr Early Dismissal
Oct 14		End 1 st Qtr. (42 days)
Oct 19	◇	Teacher In-Service Day. – 2 hr Early Dismissal
Oct 25	P	P/T Conf. (4:30 pm-8:30 pm)
Oct 26	□	Prof. Dev. – 1 hr Early Dismissal
Oct 27	PX	P/T Conf. (8:00 am-8:30 pm)—No School
Oct 28	X	No School
Nov 2	□	Prof. Dev. – 1 hr Early Dismissal
Nov 9	□	Prof. Dev. – 1 hr Early Dismissal
Nov 16	□	Prof. Dev. – 1 hr Early Dismissal
Nov 23		Thanksgiving Eve -2 hr Early Dismissal
Nov 24	H	Thanksgiving Day (No School)
Nov 25	V	No School
Nov 30	□	Prof. Dev. – 1 hr Early Dismissal
Dec 7	□	Prof. Dev. – 1 hr Early Dismissal
Dec 14	□	Prof. Dev. – 1 hr Early Dismissal
Dec 21	◇	Teacher In-Service – 2 hr Early Dismissal
Dec 21		End 2 nd Qtr. (46 days)/1 st Sem. (88 days)
Dec 22-31	V	Winter Break (No School)
Jan 2-3	V	Winter Break (No School)
Jan 4		Begin Second Semester
Jan 11	□	Prof. Dev. – 1 hr Early Dismissal
Jan 16	□	Martin Luther King Day (No School) PD – All Day
Jan 18	□	Prof. Dev. – 1 hr Early Dismissal
Jan 25	□	Prof. Dev. – 1 hr Early Dismissal
Feb 1	□	Prof. Dev. – 1 hr Early Dismissal
Feb 8	□	Prof. Dev. – 1 hr Early Dismissal
Feb 15	□	Prof. Dev. – 1 hr Early Dismissal
Feb 20	V	President's Day (No School)
Feb 22	□	Prof. Dev. – 1 hr Early Dismissal
Feb 29	□	Prof. Dev. – 1 hr Early Dismissal
Mar 7	◇	Teacher In-Service – 2 hr Early Dismissal
Mar 9		End 3 rd Qtr. (46 days)
Mar 14	P	P/T Conf. (3:30pm-8:30 pm) – 1 hr Early Dismissal
Mar 15	PX	P/T Conf. (8:00 am-8:30 pm)—No School
Mar 16	X	No School
Mar 19-20	V	Spring Break
Mar 21	□	Prof. Dev. – 1 hr Early Dismissal
Mar 28	□	Prof. Dev. – 1 hr Early Dismissal
Apr 4	□	Prof. Dev. – 1 hr Early Dismissal
Apr 6	V	Good Friday – (No School)
Apr 11	□	Prof. Dev. – 1 hr Early Dismissal
Apr 18	□	Prof. Dev. – 1 hr Early Dismissal
Apr 25	□	Prof. Dev. – 1 hr Early Dismissal
May 2	□	Prof. Dev. – 1 hr Early Dismissal
May 9	□	Prof. Dev. – 1 hr Early Dismissal
May 10	SL	Seniors Last Day
May 13		Graduation
May 16	□	Prof. Dev. – 1 hr Early Dismissal
May 17	L	Last Day of School – 2 hr Early Dismissal
May 17	◇	Teacher In-Service – 2 hr Early Dismissal
May 17		End 4 th Qtr (46 days)/End 2 nd Sem. 180 days
May 18	◇	Teacher In-Service – All Day
May 28	H	Memorial Day

2011-2012 Atlantic CSD Testing Calendar

APPROVED 03/08/2011

Start – Finish
(August 17, 2011 – May 17, 2012)

Summary of Calendar

Days in classroom:
 First Semester 88
 Second Semester 92
TOTAL CALENDAR DAYS 180

TOTAL CONTRACT DAYS 190

CALENDAR LEGEND

Classes Start	S
P/T Conferences	P
Holidays	H
No School	X
Vacation Day	V
In-Service Day	◇
Professional Development	□
Last Day of School	L

TESTING LEGEND

- DIBELS**
Dynamic Indicators of Basic Early Literacy Skills
- NWEA**
Northwest Evaluation Association
- ITBS**
Iowa Tests of Basic Skills
- ITED**
Iowa Tests of Educational Development
- ASVAB**
Armed Services Vocational Aptitude Battery

POST SECONDARY TESTS

- ACT**
October 22
December 10
February 11
April 14
June 9
- SAT**
November 9

August					Student Days
M	T	W	Th	F	
8	9	10	11◇	12◇	
15◇	16◇	17S	18	19	3
22	23	24□	25	26	8
29	30	31□			11
September					
			1	2	13
5H	6	7□	8	9	17
12	13	14□	15	16	22
19	20	21□	22	23	27
26	27	28□	29	30	32
October					
3	4	5□	6	7	37
10	11	12□	13	14	42
17	18	19◇	20	21	47
24	25P	26□	27PX	28X	52
31					53
November					
	1	2□	3	4	57
7	8	9□	10	11	62
14	15	16□	17	18	67
21	22	23□	24H	25V	70
28	29	30□			73
December					
			1	2	75
5	6	7□	8	9	80
12	13	14□	15	16	85
19	20	21◇	22V	23V	88
26V	27V	28V	29V	30V	
January					
2V	3V	4	5	6	91
9	10	11□	12	13	96
16□	17	18□	19	20	100
23	24	25□	26	27	105
30	31				107
February					
		1□	2	3	110
6	7	8□	9	10	115
13	14	15□	16	17	120
20V	21	22□	23	24	124
27	28	29□			127
March					
			1	2	129
5	6	7◇	8	9	134
12	13	14P	15PX	16X	139
19V	20V	21□	22	23	142
26	27	28□	29	30	147
April					
2	3	4□	5	6V	151
9	10	11□	12	13	156
16	17	18□	19	20	161
23	24	25□	26	27	166
30					167
May					
	1	2□	3	4	171
7	8	9□	10	11	176
14	15	16□	17L	18◇	180
21	22	23	24	25	
28H	29	30	31		
June					
				1	
4	5	6	7	8	
11	12	13	14	15	

DIBELS
 August 25-26 K-3
 August 29-30 4-5

IA End-of Course PRETEST (Math & Rdg)
 September 6-9 9

NWEA
 September 7-9 6-8
 September 12-16 4-5
 September 19-23 3

PSAT (optional sign-up)
 October 12 10-11

ITED
 October 31-November 4 9-11

ASVAB (optional)
 November 2 12

ITBS
 November 7-18 2-8

DIBELS
 January 9-10 K-3
 January 11-12 4-5

NWEA
 April 16-20 6-8
 April 23-27 4-5
 April 30-May 4 3

DIBELS
 May 7-8 K-3
 May 9-10 4-5

IA End-of-course POSTTEST (Math & Rdg)
 May 14-17 9

Certified Staff

Atlantic High School

Tarah Anderson
Steve Baier
Derek Bair
Ginger Bechtold
Allison Berryhill
Kathy Blazek
Kathy Bradfield
Tim Duff
Trudy Eblen
Dan Fallon
Craig Fredin
Nicholas Hackman
Angela Hannigan
Rhonda Hawkins
Sheila Hayden
Terry Hinzmann
Kathy Hobson
Meryl Hopper-Henningsen
Dan Huey
Elizabeth Huggins
Paul Iekel
Bruce Johnk
Lucas Johnson
Laura Karas
Jarrod O'Donnell
Casey Pelzer
Trace Petersen
Nancy Rasmussen-Jenkins
Natalie Ross
Nicholas Ross
Bev Schelling
Terry Schuman
Matt Smith
Heather Turpin
Pat Wiederien
Tony Wiley

CCEOC/Hospital Program

Karen Vogl
Justin Williams
Brenda Defenbaugh
Pattiey Koontz

Washington Elementary

Jodie Allen
Sharon Ambrose
Dara Bartz
Nancy Christensen
Tracy Daugherty
Joanne DeArment
Janice Dickerson
Faye Dreyer
Laurie Fell
Christi Garrett
Missy Goergen
Jennifer Hartwig
Beth Haupt
Taylor Hastings
Martha Hatfield
Sheryl Hinzmann
Peggy Jacobs
Michelle Jones
Lisa Krogman
Margo Magill
Beth McLaren
Rita McLaren
Debbie Murphy
Deb Nelson
Pat Nelson
Barb Olsen
Becky Osborne
Jill Pollard
Melanie Rasmussen
Cathy Renaud
Sue Riggs
Jenny Roach
Denise Sasse
Valeria Stickler
Steffani Tarrell
Pam Tibken
Jayne Tyler
Marsha Von Seggern
Nancy White

Certified Staff

Atlantic Middle School

Ginger Bechtold
 Steve Blazek
 Deb Burton
 Sandy Cooper
 Mike Davis
 Drew Duff
 Sheryl Dusenberry
 Marilyn Jacobs
 Linda Joyce
 Cathy Larsen
 Marnie Leiferman
 Heather Lundquist
 Michael McDermott
 Jeff Nederhoff
 Amber Moore
 Lisa Munsey
 Leah O'Donnell
 Angela Oglesbee
 Deb Peppers
 Andrea Reilly
 Vernon Rhodes, Jr.
 Joanne Sandage
 Angela Sieh
 Cheryl Thompson
 Doug Tudehope

Schuler Elementary

Katie Chamberlain
 Melia Clark
 Ed DenBeste
 Janice Dickerson
 Drew Duff
 Bruce Hansen
 Kathi Hansen
 Paulette Hansen
 DeLana Harris
 Janet Hascall
 Martha Hatfield
 Michelle Jones
 Gini Jordan
 Paul McKay
 Jill Miller
 Becky Riesgaard
 Angela Sieh
 Cheryl Thompson
 Jennifer Hartwig, ELL
 Linda Nichols, homeschool coordinator
Nurses
 Lori Mudd
 Brandi Nielsen
 Kristi Simpson

Experience

Education Steps

Number of Certified Staff

Masters Degree plus 30 or more hours	26
Masters Degree plus 15 hours	7
Masters Degree	17
Bachelors Degree plus 50 hours	9
Bachelors Degree plus 30 hours	22
Bachelors Degree plus 15 hours	10
Bachelors Degree	20

Non Certified Staff

Sheri Walter	Scott Peppers	Kathy Swinnerton
Stacy Van Aernam	Edna Witzman	Katherine Wendt
Laurie Parrott	Kami Bruck	Jodi Woodard
Mark Mullin	Denise Finnell	Donna Zellmer
Cathy Knuth	June Halder	Melinda McDermott
Amber Jipsen	Andrea Halterman	Clair Acker
Danna Saeugling	Julie Hansen	Loretta Barringer
Jeremy Blake	Bev Jones	Joyce Beauchamp
Tina Franken	Becky Kirchhoff	Carrie Brousseau
Regina Honke	Mary Knop	Ken Crane
Stacy Jorgensen	Dianne Lind	Rashelle Elliott
Linda Karstens	Lori McConnell	Tonna Hoover
Michele Lane	Rose McCoy	Donna Green
Susan Petersen	Anita Pangelina	Jeff Hemphill
Denise Sharp	Pam Prall	Jan Imhoff
Terry Benton	Theresa Pudlo	Lyle Kucera
Wade Johnson	Minerva Seehusen	Barb Linn
Brian Ihnken	Anne Simpson	Julia Schrader
Lyle Perkins	Gwen Ullerich	Lory Smith
Diane Hayes	Jerry McDermott	Kathleen Blake
Sharon Herring	Art Zanders	Emily McLaren
Emily Huddleson	Melissa Balch	Janet Nicklaus
Donna Joyce	Angelina Behrens	Jerry Jensen
Marcella Peck	Christina Chaney	Dan Amos
Jill Ray	LorAnn DeFrees	Ken Lawton
Diana Schuler	Dawn Dreager	David Auerbaugh
Rachel Tener	Angelina Elwess-Just	Scott Breach
Duane Baxter	Audry Farrington	Bob Cord
Paul Dreager	Marge Figgins	Stacie Sorensen
Mark Weideman	Shiela Harry	Jessica Fincel
Elaine Phillips	Lori Hayes	Heidi Peterson
Carolyn Hanson	Kathy Huey	Stephanie Stillian
Stacey Mauk	Sue Crall	Karen Hulin
Michelle McLaren	Mary McConnell	Sherry Pross
Jennifer Pelzer	Melanie McDermott	Bryce Casey
Misty Pelzer	Kathy Meyer	Linda Shafer
LaVon Sager	Becky Oliver	

Atlantic Community School District
DISTRICT FINANCES
2010-11

GENERAL FUND REVENUE		
	Amount (\$)	Percent (%) Rounded
Property Tax	\$ 4,548,472	29.8
Income Surtax	\$ 607,679	4.0
Excise Taxes	\$ 202,107	1.3
State Foundation Aid	\$ 5,576,576	37.0
AEA Flow-through	\$ 581,707	3.7
Miscellaneous Revenue	\$ 3,755,333	24.2
TOTAL	\$ 15,271,874.00	100.0

GENERAL FUND EXPENDITURES		
	Amount (\$)	Percent (%) Rounded
Salaries	\$ 8,801,657	60.9
Employee Benefits	\$ 2,539,164	17.7
Purchase Services	\$ 1,596,571	11.0
Supplies	\$ 835,304	5.8
Equipment/Property	\$ 78,166	0.5
Miscellaneous/Other	\$ 19,678	0.1
AEA Flow-through	\$ 581,707	4.0
TOTAL	\$ 14,452,247	100.0

3-YEAR FINANCIAL PERFORMANCE

	2008-09	2009-10	2010-11	
Total Revenues	\$ 13,926,649	\$ 14,501,731	\$ 15,271,876	Rev.
Total Disbursements	\$ 14,712,976	\$ 14,458,262	\$ 14,452,248	Disb.
Beginning Fund Balance	\$ 1,844,141	\$ 1,057,814	\$ 1,074,283	Beg. Fund Bal.
Ending Fund Balance	\$ 1,057,814	\$ 1,074,284	\$ 1,893,912	End. Fund Bal.
Unreserved Fund Balance	\$ 48,853	\$ 698,995	\$ 1,336,922	Unrsrvd Fd Bal
SOLVENCY RATIO	0.35%	4.82%	8.75%	Solvency Ratio

TAX RATES

	2008-09	2009-10	2010-11
Gen Fund Prop. Tax	10.88	11.83	12.55
Total Tax Rate	14.04	14.82	15.66

MANAGEMENT RESPONSE

	2008-09	2009-10	2010-11	
Management Levy	\$ 175,000	\$ 1,000,000	\$ 150,000	Management
Cash Reserve Levy-SBRC	\$ -	\$ 200,000	\$ 98,330	Cash Reserve-SBRC
Cash Reserve-Other	\$ -	\$ 700,000	\$ 600,000	Cash Reserve-Other
Instructional Support	\$ 13,008	\$ 12,253	\$ 11,580	Instructional Support
Regular PPEL	\$ 106,775	\$ 118,016	\$ 122,816	Regular PPEL
Voted PPEL	\$ 65,176	\$ 62,287	\$ 74,653	Voted PPEL

FINANCIAL SOLVANCY RATIO

Target Solvency Positions	5% to 10%
Acceptable Solvency Position	0% to 4.99%
Solvency Alert	-3% to 0%
Solvency Concern	-3% and lower

Non Discrimination Statement

It is the policy of Atlantic Community Schools to provide an educational and working environment that provides an equal opportunity to all. In accordance with federal and state law Atlantic Community School District prohibits unlawful discrimination on the basis of disability, sex, age, race, creed, color, national origin, religion, veteran status, sexual orientation, and gender identity. This applies to all district administrators, staff, students, applicants for employment, and visitors.

Students, parents, staff or other individuals who believes that he/she has been subjected to discrimination or harassment in violation of the District's Equal Employment Opportunity Policy and/or the Anti-bullying/Harassment Policy may take action through an informal process, or a formal complaint process, or both.

2011-2012 Atlantic Community School District School Improvement Advisory Committee

Michael Amstein	Stacey Hornung	Troy Parrott
Pamela Amstein	Dr. Mark Johnson	Kristy Pellett
Matt Alexander	Gini Jordan	Lanette Plambeck
Lynn Barnes	Angie Kay	Josh Rasmussen
Stacey Bean	Ken Kay	Lori Reid
Todd Bean	Dr. Emerson Link	Andrea Reilly
Ginger Bechtold	Jon Martens	Bob Reilly
Deb Church	Mike McDermott	Shawnell Richter
Denise Coder	Heather McKay	PJ Richter
Dennis Davis	Josh McLaren	JoAnn Runyan
Mary Beth Fast	Dennis Meyer	Angela Sieh
Donna Forte	Sally Meyer	Glenn Smith
Andrea Halterman	Lori Mudd	Kristen Templeton
Rod Hartwig	Michelle Mullenix	Cheryl Thompson
Phil Hascall	Tori Newell	Jayne Tyler
Diane Hayes	Leah O'Donnell	Tina Wahlert
Kathy Hobson	Mary Paasch	Melissa Wheeler

For a hard copy of the annual progress report call 712-243-4252 or view the report online at <http://www.atlantic.k12.ia.us/~apr11/index.htm>

District Contacts

Superintendent: Michael Amstein
Telephone: 712-243-4252
Email: mamstein@atlantic.k12.ia.us

Curriculum Director: Matt Alexander
Telephone: 712-243-1370
Email: malexander@atlantic.k12.ia.us

Technology Director: Roger Warne
Telephone: 712-249-5973
Email: rwarne@atlantic.k12.ia.us

High School Principal: Heather McKay
Telephone: 712-243-5358
Email: hmckay@atlantic.k12.ia.us

Asst. Principal/Athletic Director: Josh Rasmussen
Telephone: 712-243-5364
Email: jrasmussen@atlantic.k12.ia.us

Middle School Principal: Cameron Smith
Telephone: 712-243-1330
Email: csmith@atlantic.k12.ia.us

Schuler Elementary Principal: Matt Alexander
Telephone: 712-243-1370
Email: malexander@atlantic.k12.ia.us

Washington Elementary Principal: Stacey Hornung
Telephone: 712-243-5234
Email: shornung@atlantic.k12.ia.us

District Addresses

Atlantic Community School District, Office of the Superintendent

1100 Linn Street
Atlantic, Iowa 50022
FAX 712-243-8023

Atlantic High School

1201 E 14th Street
Atlantic, Iowa 50022
FAX 712-243-8007

Atlantic Middle School

1100 Linn Street
Atlantic, Iowa 50022
FAX 712-243-7732

Schuler Elementary

1100 Linn Street
Atlantic, Iowa 50022
FAX 712-243-2120

Washington Elementary

500 E 14th Street
Atlantic, Iowa 50022
FAX 712-243-5275

Cass County Education Opportunity Center (CCEOC)

704 Maple Street
Atlantic, Iowa 50022
Phone: 712-243-3535
FAX: 712-243-8069

Bus Garage

63455 White Pole Road
Atlantic, Iowa 50022
Phone: 712-243-3374