

Report on Excellence

Annual Report for Atlantic Community School District
September, 2008

| Atlantic Community Schools Mission | ANNUAL REPORT INTRODUCTION Wendy Prigge, PH.D, Superintendent |
|---|--|
| <p><u>Vision</u> Students become productive citizens in our changing world.</p> <p><u>Mission</u> The Atlantic Community School District will prepare all learners to be creative, innovative, and productive citizens by providing diverse opportunities to learn and apply relevant skills and knowledge in a positive, disciplined, and challenging environment.</p> <p><u>Contents</u> Academic Achievement For 2007-08 Charts Other Assessment Data for 2007-08 District Enrollment Building & Staff Profile Atlantic Board of Education Comprehensive School Improvement Plan (CSIP) Community Financial Support Physical Plant & Equipment Levy (PPEL) Projects Instructional Support Levy School Improvement Local Option (SILO) Budget Report</p> <p>Send any comments or suggestions to:</p> <p>Atlantic Community School District 1100 Linn Street</p> | <p>Student achievement in reading, math, and science is the focus of the Atlantic Community Schools. Student learning is reinforced by state of the art technology. Staff members collaborate with parents and community members to create a positive learning climate where all students feel safe and connected to school.</p> <p>Achievement in reading, math and science sets the stage for future learning. Many resources have been committed to continue progress towards high achievement in the core areas and to increase proficiency levels for struggling students. Test results show that the majority of Atlantic students are proficient in reading, math, and science, but we can do better. Our Iowa percentile ranks show that our students perform as other Iowa students and score in the average ranges for their Iowa classmates.</p> <p>During the 2003-2004 school year, voters in our district passed both an Instructional Support Levy and a School Infrastructure Local Option tax. This has provided excellent support for instructional materials, programs for high risk students, and for professional development. Great teachers are the key to increasing student achievement. The best teachers continually improve their strategies and their own skills to help students reach their full scholastic potential.</p> <p>In Atlantic teachers and support staff strive to increase the achievement of all learners, from the talented and gifted to those with special learning needs, from preschool learners to adults who teach their peers new learning strategies. Atlantic students will continue to leave high school well prepared to face challenging futures.</p> <div data-bbox="699 1486 1344 1591" style="text-align: center;">2005-10 DISTRICT LONG-RANGE GOALS</div> <p>GOAL 1: All K-12 students will achieve at high levels in reading.</p> <p>GOAL 2: All K-12 students will achieve at high levels in mathematics.</p> <p>GOAL 3: All K-12 students will achieve at high levels in science.</p> <p>GOAL 4: All K-12 students will integrate technology into their learning (reading, math, and science).</p> <p>GOAL 5: All students will feel safe at and connected to school.</p> |

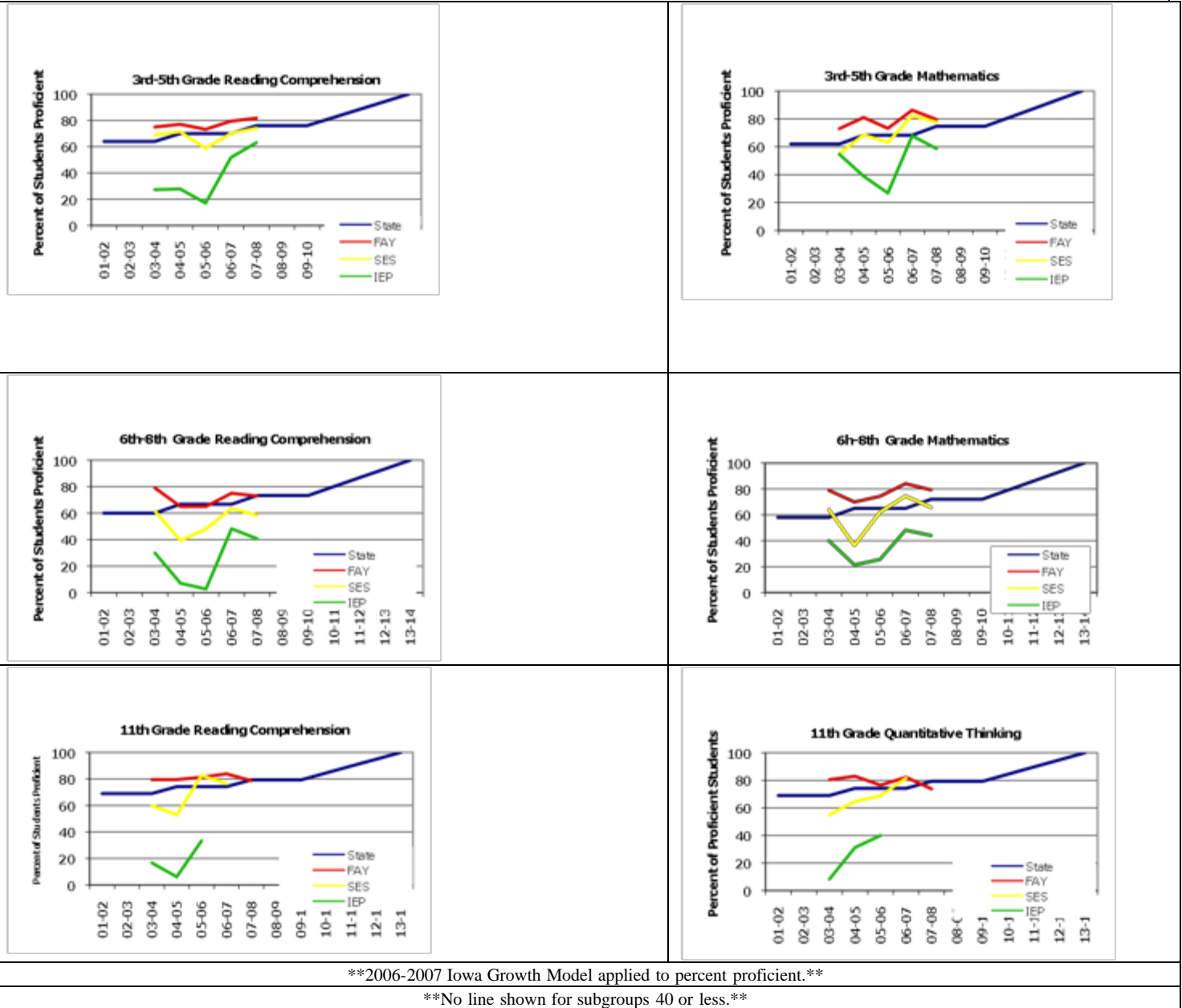
Atlantic, Iowa 50022

Phone: 712-243-4252

ACSD Academic Achievement 2007-2008

The following charts show the percent of Full Academic Year (FAY) Atlantic students proficient in reading, math, and science using the Iowa Tests of Basic Skills (ITBS) and the Iowa Tests of Educational Development (ITED). These proficiencies are compared to the Iowa reading and math trajectories established for proficiency for No Child Left Behind (NCLB). For a student to be considered proficient, the student must score above the 40th percentile (NPR) on these standardized achievement tests. Proficiencies of all (FAY) students, low socioeconomic students (SES), and students on Individualized Educational Plans (IEP) are shown below. Beginning 05-06, the scores indicate compacted grades levels, grades 3-5, 6-8, and grade 11.

*The complete 2007-2008 Annual Progress Report (APR) can be found at <http://www.atlantic.k12.ia.us> under Achievement then choose the APR or a paper copy at the Office of the Superintendent.



% of Students Scoring above the 40th NPR on ITBS/ITED

| | Reading Comprehension | | | | | Math Total | | | | | Science | | | | |
|------------|-----------------------|-------|-------|-------|-------|------------|-------|-------|-------|-------|---------|-------|-------|-------|-------|
| | 03-04 | 04-05 | 05-06 | 06-07 | 07-08 | 03-04 | 04-05 | 05-06 | 06-07 | 07-08 | 03-04 | 04-05 | 05-06 | 06-07 | 07-08 |
| 4th Grade | 72% | 78% | 71% | 79% | 75% | 71% | 81% | 72% | 86% | 75% | NA | NA | 78% | 87% | 73% |
| 8th Grade | 75% | 65% | 64% | 75% | 66% | 76% | 70% | 76% | 84% | 74% | 79% | 80% | 69% | 84% | 76% |
| 11th Grade | 78% | 77% | 80% | 84% | 70% | 80% | 80% | 75% | 82% | 75% | 76% | 73% | 77% | 80% | 73% |

Other assessment data for 2007-2008:

- AMS is on the Watch List for reading comprehension.
- 76.56% (98 out of 128) of the 2008 graduating seniors intended to pursue post-secondary education/training.
- 61.6% of the 2008 graduates completed a core program of studies: 4 years of English, 3 or more years each of mathematics, science, and social studies compared to 61% (2007) and 52.83% (2006) graduates.
- The average ITBS/ITED National Percentile Rank for grades 2-8, and 11 in reading comprehension had gradually increased from 60.4 (fall 2001) to 62.9 (fall 2002) then decreased from 60.8 (fall 2004) to 60.6 (fall 2005) and increased to 64.3(fall 2006) but decreased to 60.6 (fall 2007).
- The average ITBS/ITED National Percentile Rank for grades 2-8, and 11 in mathematics has gradually increased from 58.7(fall 1998) to 67.8(fall 2006) but decreased to 65.3 (fall 2007).
- In grades 3-8, 5 out of the 6 grades exceeded their expected (typical) growth on NWEA reading and 6 out of the 6 grades exceeded their expected (typical growth) on NWEA math.
- 39% of the 2007-2008 sophomores scored in the upper quartile on the PLAN, an increase of 9%.
- 76.56% of the students, grades 9-12, who took ACT during 2007-2008 scored above the cut score of 20 (Spring, 2008 BEDS).

•District assessments used to measure academic achievement are listed below.

| 2007-2008 District Assessments* | Grade Level |
|---------------------------------|---|
| CBM | K-5 th math |
| ITBS/ITED | 2 nd -9 th , and 11 th |
| DIBELS | K- 5 th reading |
| NWEA | 3 rd – 8 th reading and math |
| NWEA | 4 th -8 th science |
| PLAN | 10 th reading, math, and science |
| ASVAB | 12 th |

*Results of these measures can be found at <http://www.atlantic.k12.ia.us>.
Click on Achievement and choose APR 2007-2008.

- The district’s long-range goals for all K-12 students emphasize high levels of achievement in mathematics, reading, and science. During 2007-2008, 3 out of the 8 indicators for increasing student achievement were met in math, 4 out of 8 indicators in reading, and 1 out of 5 indicators in science.
- The district’s focus at each level during 2008–2009 will be to increase student achievement in the area of reading comprehension by decreasing the gap between the subgroups.

Other assessment data for 2006-2007(reported in 2007-2008):

- The Atlantic High School graduating class of 2007 had a graduation rate of 88.24%, a decrease of 3.16% from 2006, compared to the state graduation rate of 90.49%.
- The 2006-2007 dropout rate for grades 7-12 was 1.61% with no dropouts in grades 7 and 8.
- K-8 average daily attendance in 2006-2007 was 96.38%.

DISTRICT ENROLLMENT

The district's enrollment had continued to decline since 1995-96, and in 2007-08 there was an increase of .3 students. Enrollment is projected to decrease in 2008-09.

CERTIFIED ENROLLMENT 1998-99 – 2007-08

| School Year | HS Grades 9-12 | EOC Grades 9-12 | MS Grades 6-8 | SE Grades 4-5 | WA Grades K-3 | Special Ed Preschool, Self Contained, and S&P | All Grades Home School, Tuition Out and Open Enrolled Out | Certified GRAND TOTAL |
|-------------|----------------|-----------------|---------------|---------------|---------------|---|---|-----------------------|
| 2007-08 | 474 | 17 | 284 | 180 | 421 | 30 | 53.1 | 1459.1 |
| 2006-07 | 455 | 14 | 309 | 199 | 416 | 17 | 48.8 | 1458.8 |
| 2005-06 | 464 | 16 | 324 | 210 | 406 | 18 | 53 | 1491.0 |
| 2004-05 | 439 | 11 | 340 | 195 | 388 | 23 | 44.6 | 1440.6 |
| 2003-04 | 423 | 14 | 350 | 205 | 388 | 25 | 51.0 | 1456.0 |
| 2002-03 | 457 | 10 | 365 | 210 | 402 | 27 | 55.5 | 1526.5 |
| 2001-02 | 456 | 18 | 342 | 232 | 408 | 29 | 64.6 | 1549.6 |
| 2000-01 | 504 | 19 | 347 | 248 | 433 | 20 | 50.3 | 1621.3 |
| 1999-00 | 534 | 18 | 341 | 245 | 443 | 26 | 47.3 | 1654.3 |

STUDENTS SERVED BY ATLANTIC COMMUNITY SCHOOL DISTRICT – SEPTEMBER, 2007

| <u>HIGH SCHOOL</u> | | <u>SCHULER ELEM</u> | | <u>MIDDLE SCHOOL</u> | | <u>WASHINGTON ELEM</u> | |
|--------------------|-----|---------------------|-----|----------------------|-----|------------------------|-----|
| Grade 12 | 146 | Grade 8 | 99 | Grade 5 | 108 | Grade 3 | 113 |
| Grade 11 | 135 | Grade 7 | 102 | Grade 4 | 83 | Grade 2 | 115 |
| Grade 10 | 128 | Grade 6 | 102 | | | Grade 1 | 102 |
| Grade 9 | 122 | | | | | Kindergarten | 94 |
| | | | | | | Disc Garden | 16 |

ADDITIONAL STUDENTS SERVED BY ATLANTIC COMMUNITY SCHOOL DISTRICT

Home School Open Enrolled In 4.7

Special Education Tuition In 23.0

Students attending are from: Anita, C & M, Exira, Griswold, Red Oak, Riverside, Shenandoah, Villisca, Walnut

TOTAL STUDENTS SERVED BY THE DISTRICT = 1529

BUILDING and STAFF PROFILE

Over 39.5% of Atlantic Community District teachers have training at or beyond a Master's Degree level.

| <i>Certified Staff</i> | FTE | <i>Support Staff</i> | Count | FTE |
|------------------------|-------|----------------------------------|-------|-------|
| High School | 34.67 | Custodial / Maintenance | 13 | 12.13 |
| Middle School | 28.33 | Food Service | 21 | 13.0 |
| Schuler Elementary | 16.0 | Para-Educators / Teacher's Aides | 53 | 44.75 |
| Washington Elementary | 38.0 | Secretarial | 7 | 10.91 |
| Nurses | 2.75 | Transportation | 13 | 7.17 |
| Technology Director | 1.0 | Supervisors | 4 | 3.5 |
| Administrators | 5.0 | Central Office | 5 | 4.75 |

BOARD OF EDUCATION

Serving on the School Board is a challenging responsibility requiring leadership, vision, dedication and a code of ethics. Our school board members are entrusted with one of the most important responsibilities for our children – ensuring that Atlantic Community School District help

Phillip Hascall, President
Jody Lorence, Vice President
Dennis Davis, Director
Jon Martens, Director
Kristy Pellett, Director

students obtain the highest levels of educational achievement. While school board members receive no pay, the reward comes with the satisfaction of meeting the needs of our children and our community.

Dr. Wendy Prigge, Superintendent
Lori Robertson, Board Secretary

COMPREHENSIVE SCHOOL IMPROVEMENT PLAN (CSIP)

Spanning the next five years, the Comprehensive School Improvement Plan (CSIP) will be the guide that benefits students achievements through continuous school improvement. This plan was developed to meet the state law and the federal guidelines required by the No Child Left Behind (NCLB) legislation. The plan evolved from basically four questions:

- 1) What do data tell us about our student-learning needs?
- 2) What do/will we do to meet student-learning needs?
- 3) How do/will we know that student learning has changed?
- 4) How will we evaluate our programs and services to ensure improved student learning?

An integral component is the district's career development plan that focuses on providing staff members training to improve student learning. This staff development must be based on research-based best practices, must be supported by the students' needs based on achievement data, and must be identified in the CSIP. This plan also outlines how the other state and federal programs and services (Title I, II, and IV, the mentoring program, TAG, Perkins, At-Risk, the special education programs and services) from which the Atlantic Community School District receives monies are annually evaluated.

COMMUNITY FINANCIAL SUPPORT

Physical Plant and Equipment Levy (PPEL) Projects

On May 8, 2001 the voters of Atlantic School District approved renewal of the Physical Plant and Equipment Levy (PPEL) that is funded through income surtax and local property taxes. The PPEL provides the district with the additional money needed to properly maintain and upgrade buildings and facilities. With declining student enrollment the district is unable to obtain as much "General Fund" money which is needed for education purposes. The PPEL levy provides the district with money for maintenance, repairs, and upkeep of its infrastructure and the purchase of equipment costing over \$500 per item.

With the use of PPEL monies during 2007-08, the district was able to purchase computers and security cameras. Maintenance and repair items included roofing, tuckpointing, and sidewalk repair.

PPEL expenditures for 2007-08 were \$236,517.11.

Instructional Support Levy

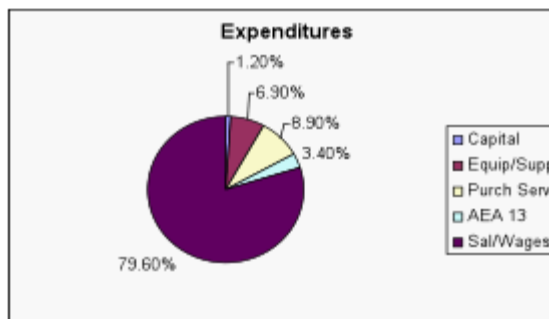
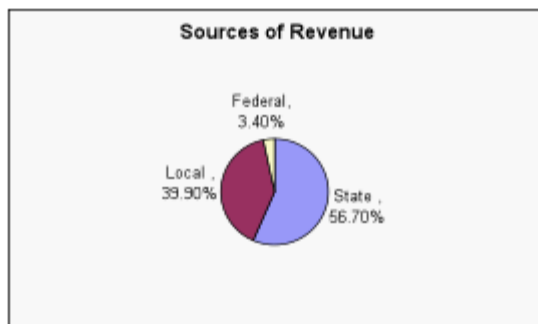
The Instructional Support Levy has provided resources for instructional equipment and supplies; computers, software, and development of technology; expanded literacy support; textbook adoption; and professional development for staff.

School Infrastructure Local Option (SILO)

On August 24, 2004 Cass County residents voted to implement a School Infrastructure Local Option sales tax. The tax provides an alternative to property taxes for funding school buildings and capital expenditures. A portion of the tax will also be used to offset debt obligations.

The Atlantic Community School District is constantly striving to provide the best educational program possible at the lowest cost to the community. As a service organization 79.6% of the budget is expended for personnel costs. The State of Iowa provides 56.7% of the total district revenue.

| | | |
|---------|------------------------------------|--|
| FY 2008 | Operating Fund | \$13,824,579 |
| | Assessed valuation per pupil | \$ 191,892 |
| | Per pupil expenditure | \$ 9,041 |
| | Average teacher salary | \$ 47,060 (without co-curricular) |
| | Tax rate per \$1,000 tax valuation | \$ 14.77268 |



NOTICE OF NONDISCRIMINATION

It is the policy of Atlantic Community Schools to provide an educational and working environment that provides an equal opportunity to all. In accordance with federal and state law Atlantic Community School District prohibits unlawful discrimination on the basis of disability, sex, age, race, creed, color, national origin, religion, veteran status, sexual orientation, and gender identity. This applies to all district administrators, staff, students, applicants for employment, and visitors. Students, parents, staff or other individuals who believes that he/she has been subjected to discrimination or harassment in violation of the District's Equal Employment Opportunity Policy and/or the Anti-bullying/Harassment Policy may take action through an informal process, or a formal complaint process, or both."